

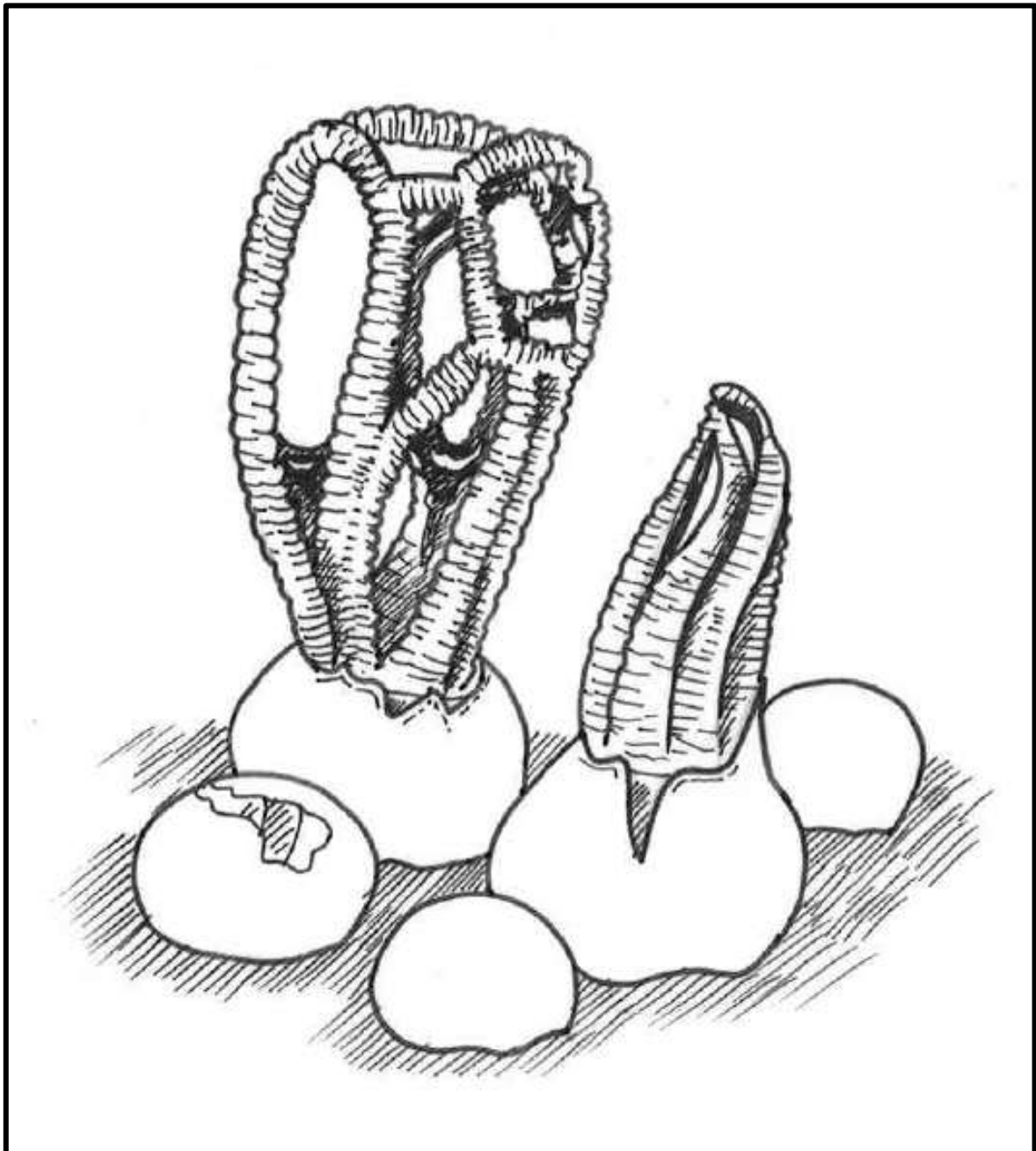
The Little Colouring Book of Australian Fungi



All drawings by Katie Syme
Produced by Fungimap Inc. 2013



Putting Australian fungi on the map



Craypot Stinkhorn

Colus pusillus

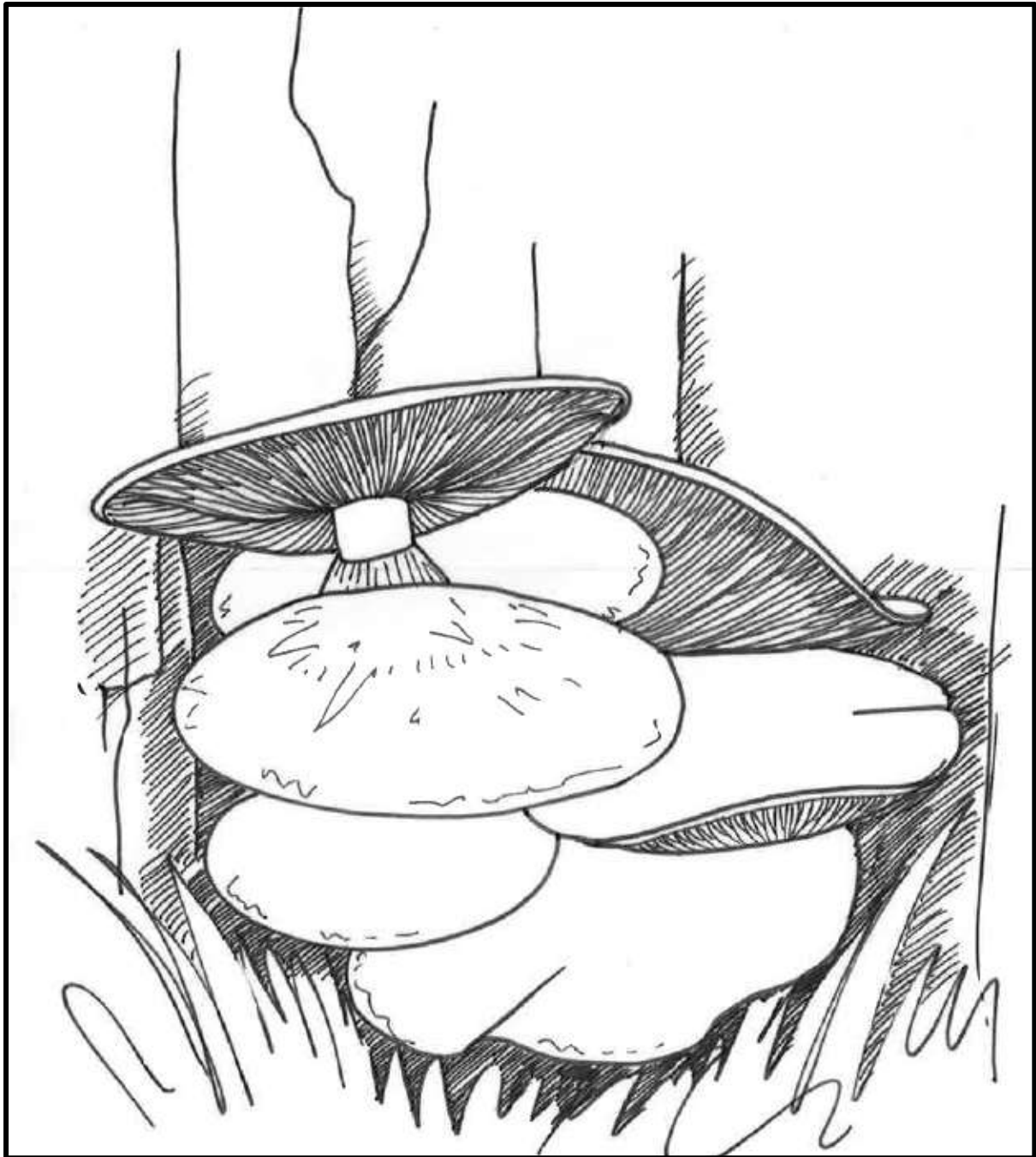
Craypot Stinkhorn grows on the ground in grass and forest leaves.
The **red arms and cage** burst from a round, **cream egg**.

Fungimap Inc.

www.fungimap.org.au



Putting Australian fungi on the map



Spectacular Rustgill

Gymnopilus junonius

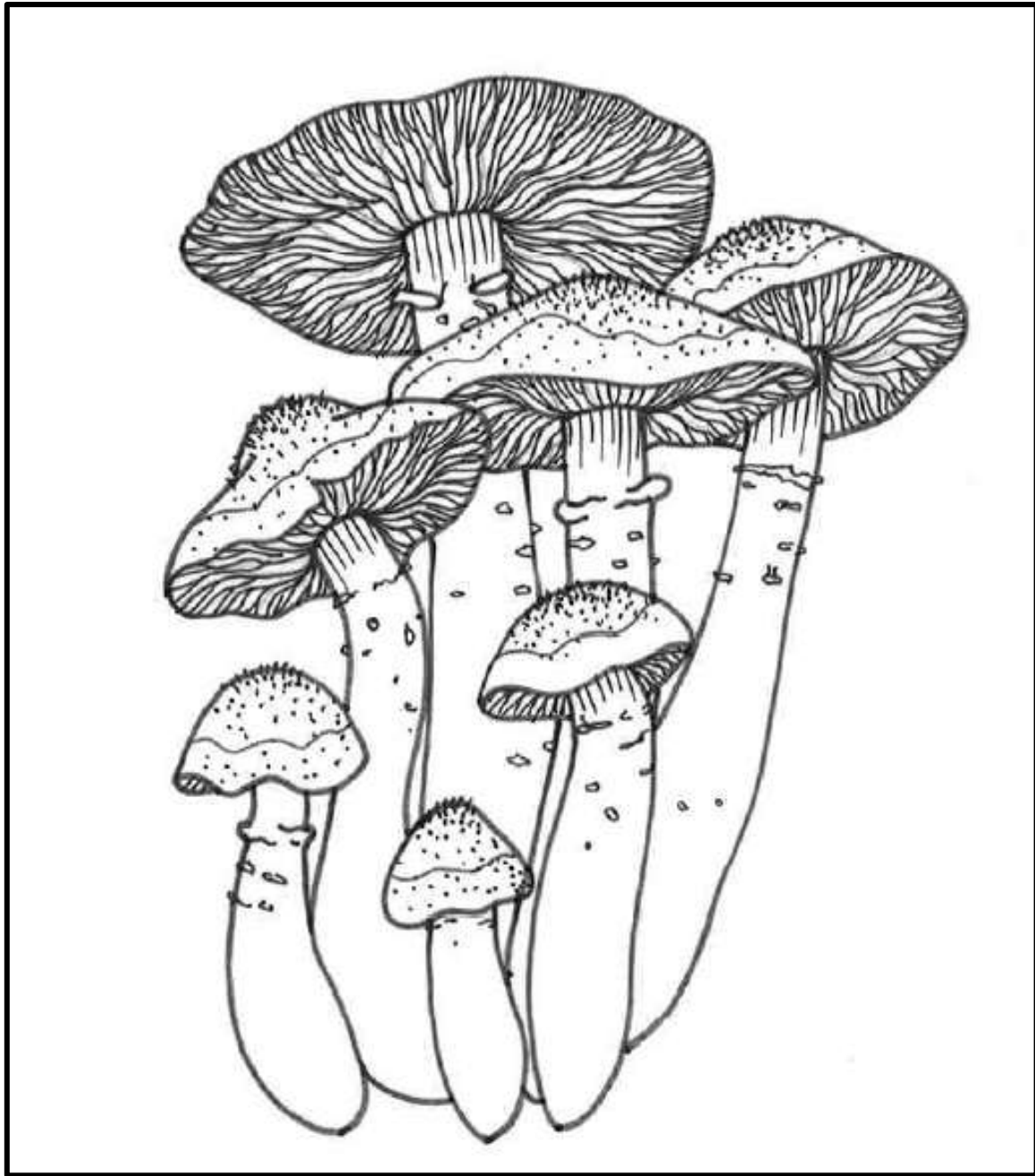
The Spectacular Rustgill grows on dead wood. It is **golden-brown** with **gold caps**, **gold stem**, and **yellow or brown gills** and **rusty spores**.

Fungimap Inc.

www.fungimap.org.au



Putting Australian fungi on the map



Australian Honey Fungus

Armillaria luteobubalina

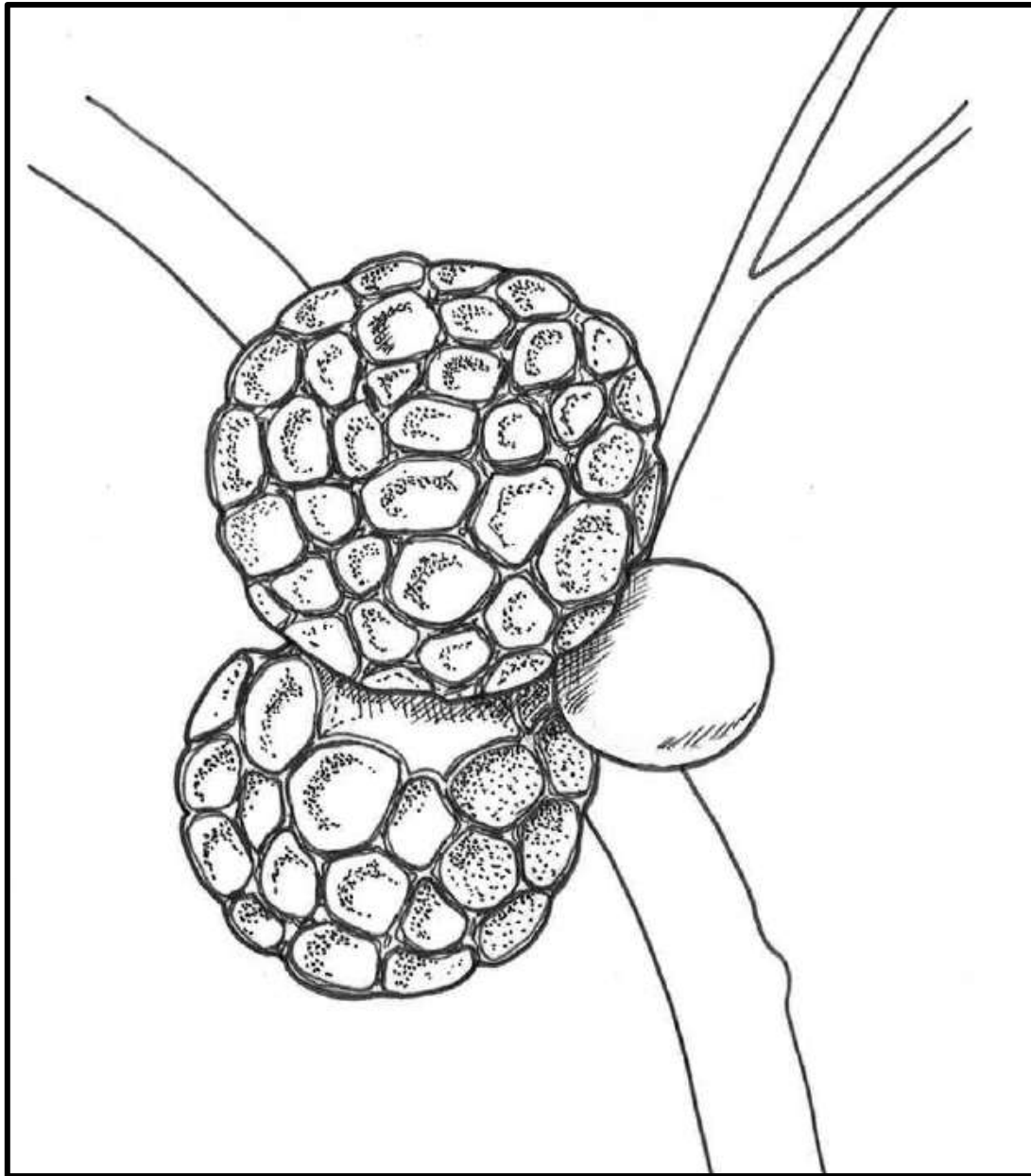
Australian Honey Fungus grows in clusters around the base of trees. It has a **yellow-brown cap** with scales that feel like sandpaper. It has **white gills with rusty-red or yellow spots at the edges**.

Fungimap Inc.

www.fungimap.org.au



Putting Australian fungi on the map



Myrtle Beech Orange

Cyttaria gunnii

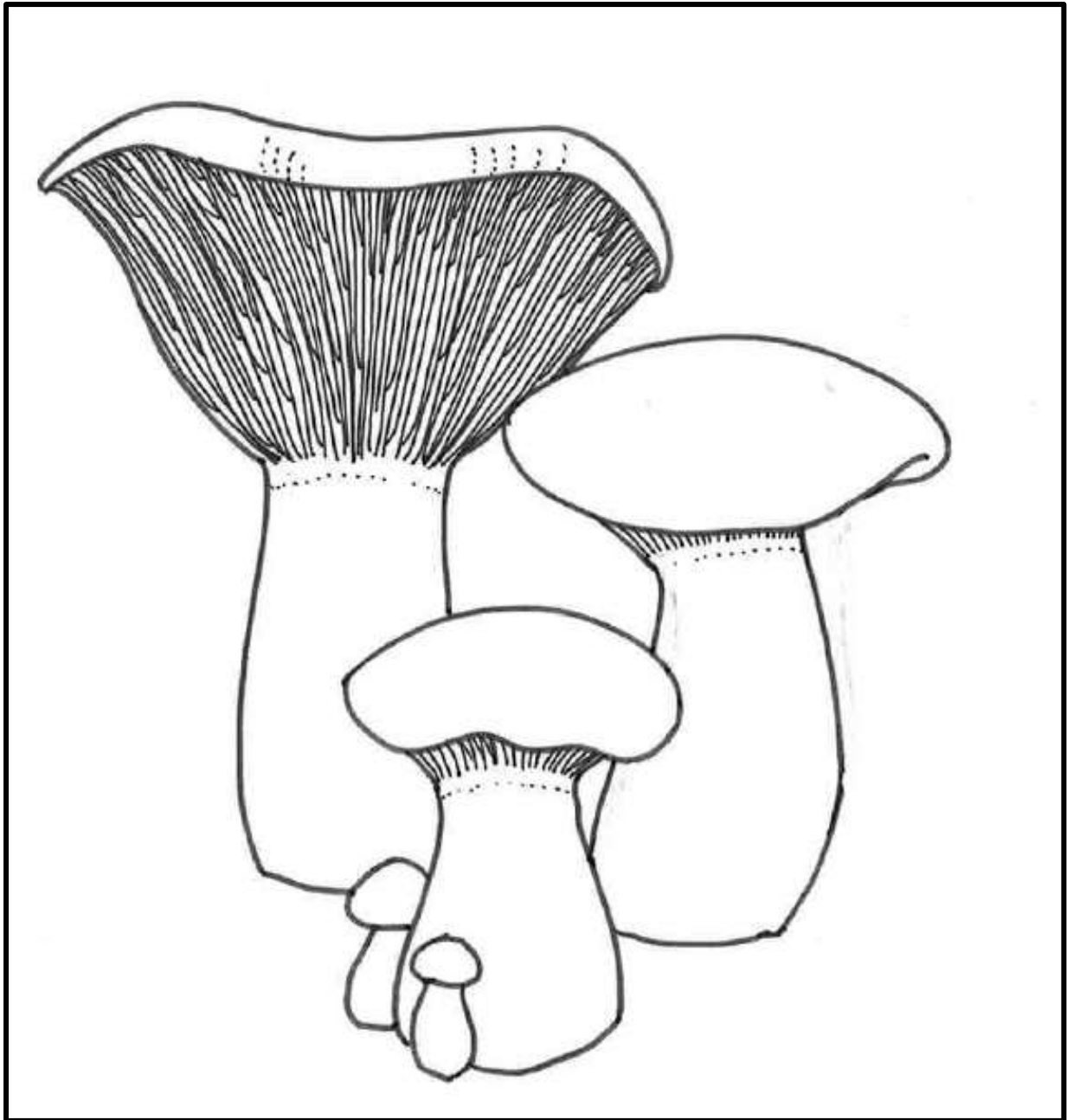
The Myrtle Beech Orange fungus grows on the branches of the Myrtle Beech tree. It is **yellow-orange** with **deep orange cavities**, like an apricot-coloured honeycomb.

Fungimap Inc.

www.fungimap.org.au



Putting Australian fungi on the map



Purple Turnover

Leucopaxillus lilacinus

Purple Turnover grows on the ground in eucalypt forests; it probably helps a nearby eucalypt tree to get food from the soil.

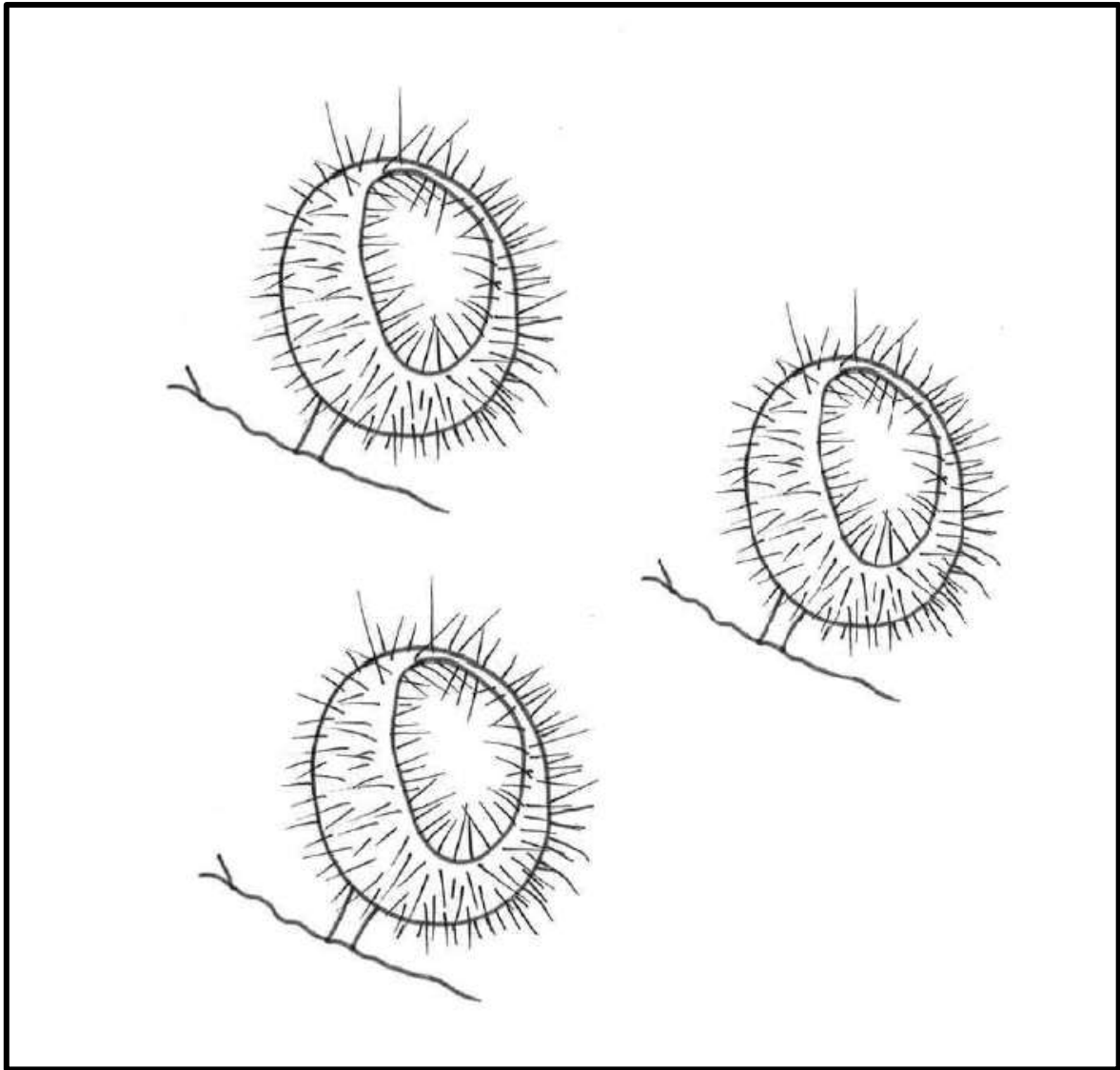
It has a dry, shiny **purple cap**, **purple and white stem**, and **cream gills** that turn **rusty-brown** with age.

Fungimap Inc.

www.fungimap.org.au



Putting Australian fungi on the map



Bristly Tropical Cup

Cookeina tricholoma

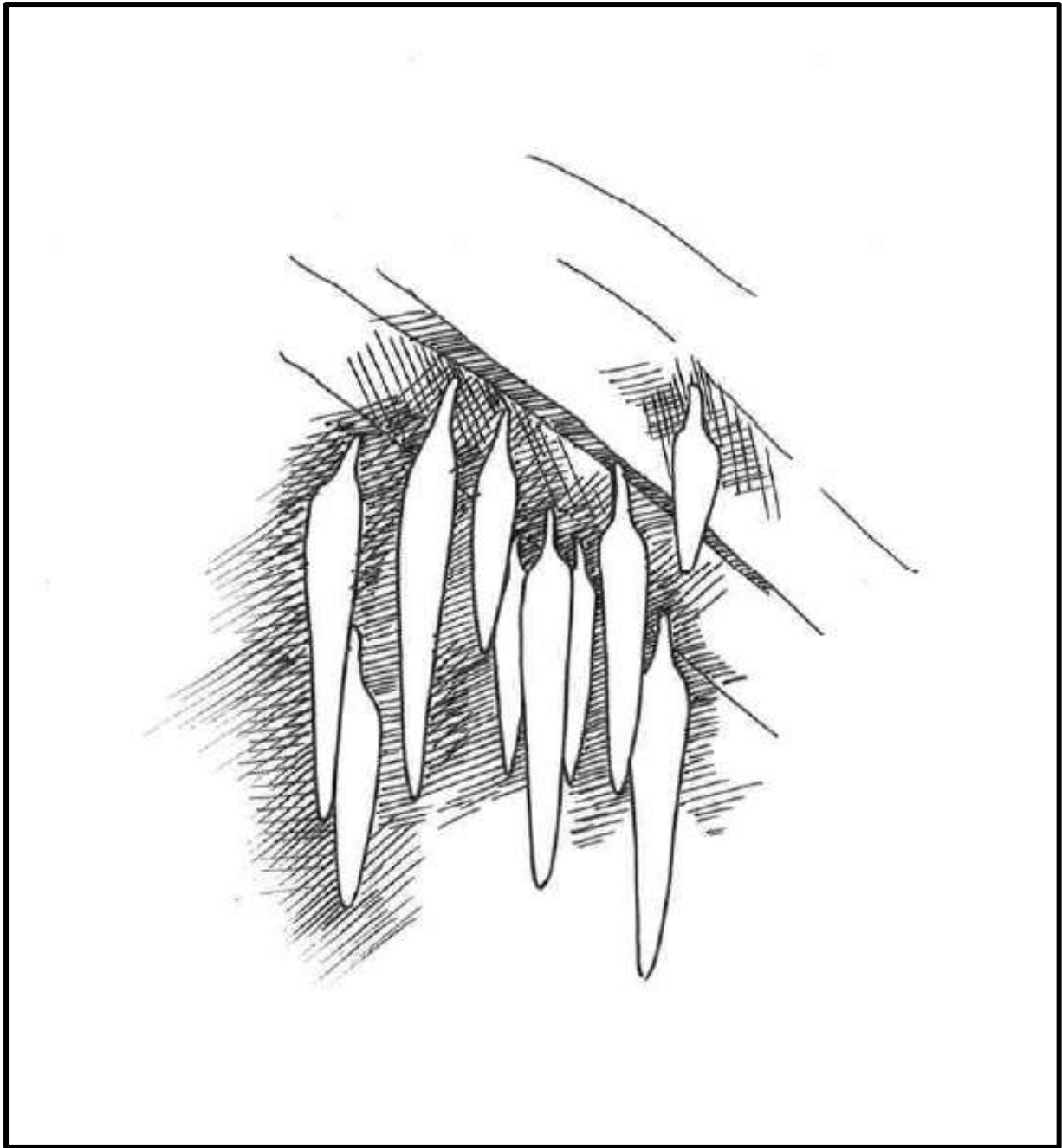
Growing on rotting wood in rainforests in Queensland, Bristly Tropical Cup is a **bright pink cup fungus** with long, **white hairs or bristles**. Its **stem can be pale pink, white or orange**.

Fungimap Inc.

www.fungimap.org.au



Putting Australian fungi on the map



Icicle

Mucronella pendula

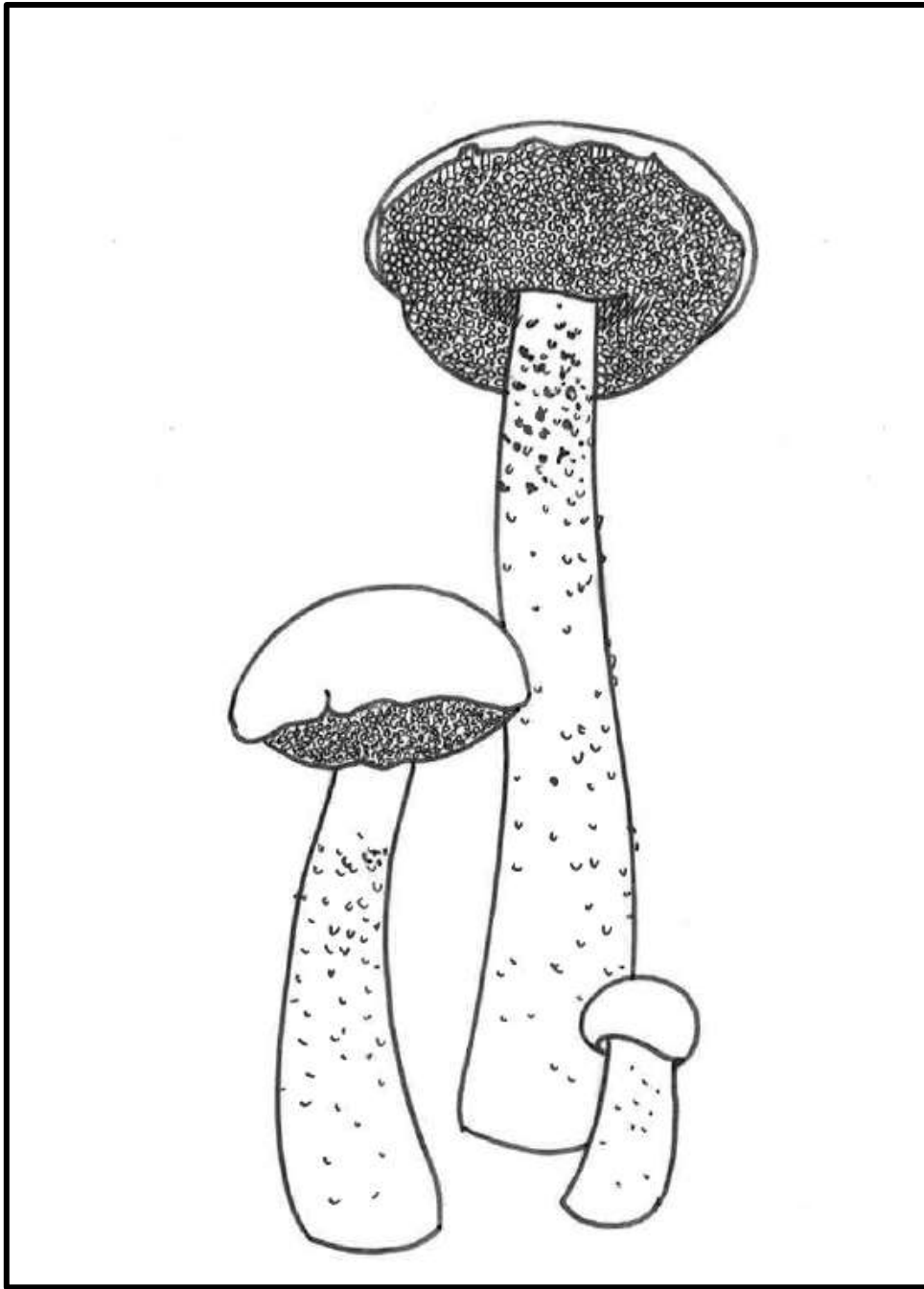
The Icicle fungus grows dangling from the underside of rotting logs in wet forests in southern Australia. Icicles can be completely **white** with a **slight blue tint**, and can **stain yellow-brown with age**.

Fungimap Inc.

www.fungimap.org.au



Putting Australian fungi on the map



Rhubarb Bolete

Boletellus obscurecoccineus

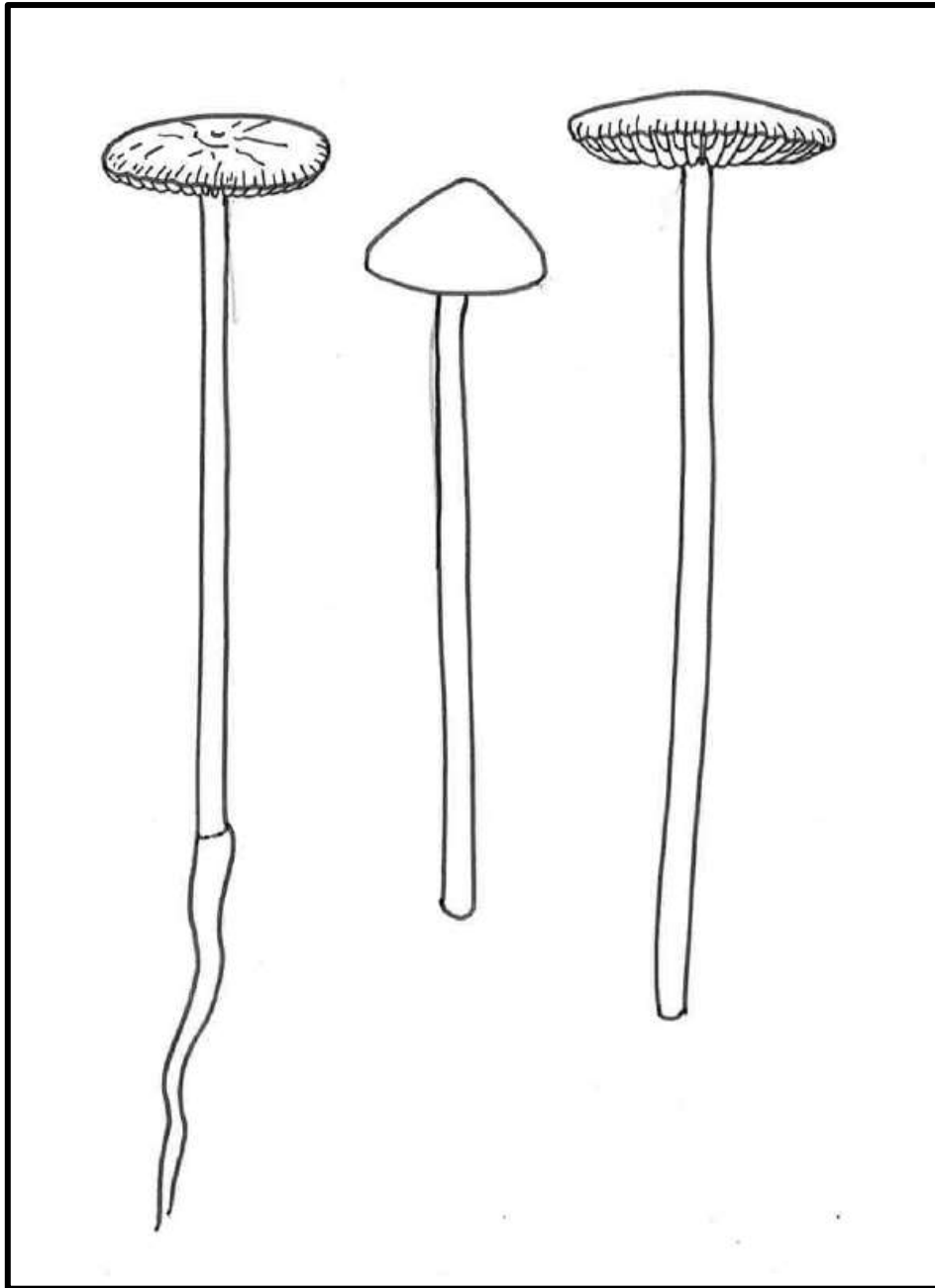
Growing in dead leaves, Rhubarb Bolete has a **bright red cap** with **yellow pores** and **stem that is pale yellow at the top and red at the bottom**. Sometimes the stem has **white scales**.

Fungimap Inc.

www.fungimap.org.au



Putting Australian fungi on the map



Rooting shank

Oudemensiella radicata

Rooting Shank is a tall mushroom that grows on dead wood on the ground. It has a **flat, chocolate-brown cap, white gills** and a **stem that is white at the top and grey at the bottom.**

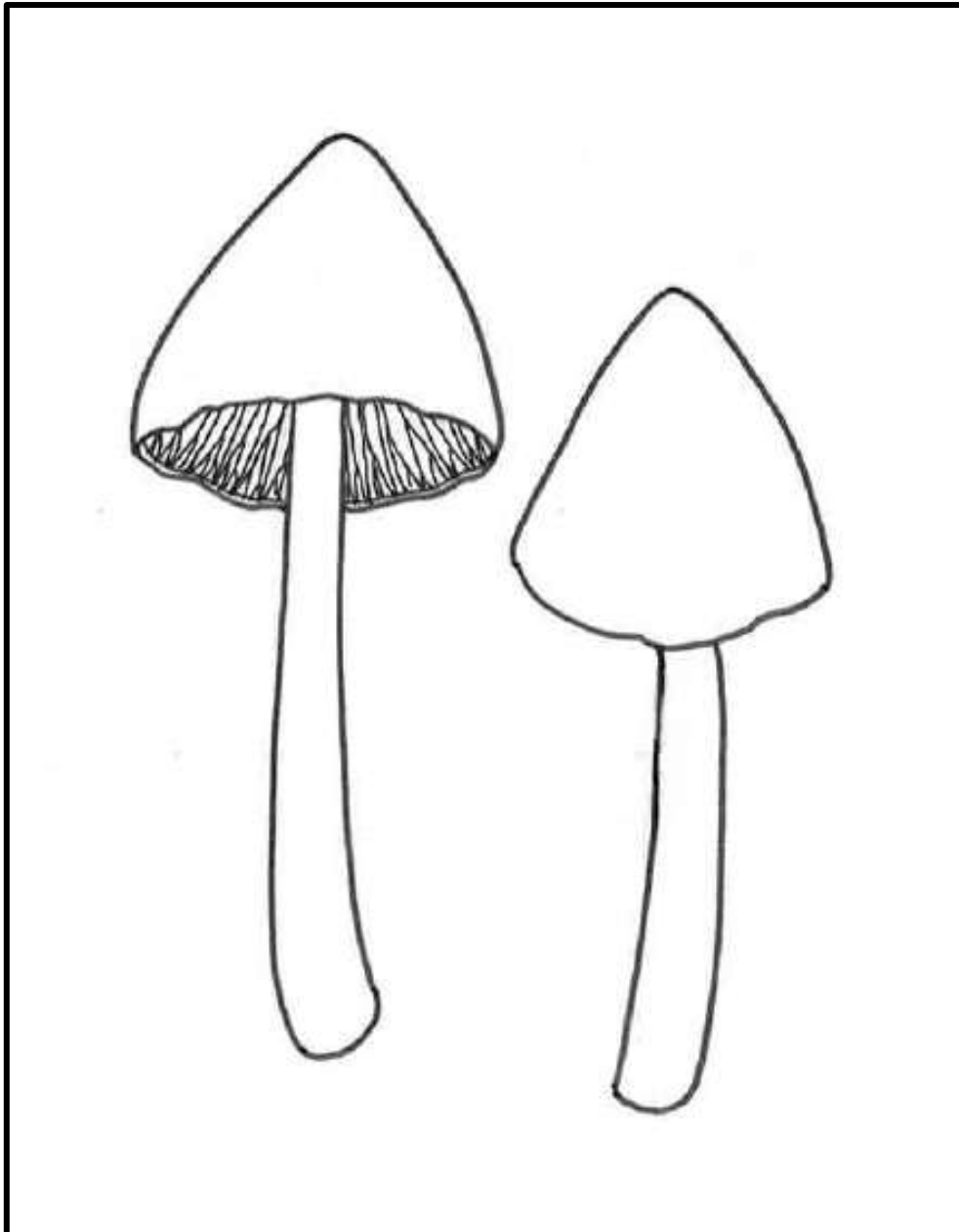
Rooting Shank has **white spores.**

Fungimap Inc.

www.fungimap.org.au



Putting Australian fungi on the map



Sky-blue Pinkgill

Entoloma virescens

Growing in native forests, Sky-blue Pinkgill has an **intense sky-blue cap** that turns **greenish-blue** as it ages. Its **spores are a deep pinkish-brown** that turn the **gills pink-brown** when they mature.

Fungimap Inc.

www.fungimap.org.au



Putting Australian fungi on the map